



## **Overview & Update**

**October 22, 2022**

**Chris Gamache, Trails Manager, Polaris**

**(former snowmobile/ATV director, NH DCNR)**

# What is Ride Command?

RIDECOMMAND®



## Web

- [ridecommand.polaris.com](https://ridecommand.polaris.com)
- Find new places and trails to ride

## App

- Android and iPhone
- Trails app to track your rides and waypoints and follow your group

## In-Vehicle Display

- 4.3" Polaris Interactive Digital Display (PIDD)
- 7" display (pictured)

## Cloud backend



The Modern Version of Old School Maps



## Choose your sport

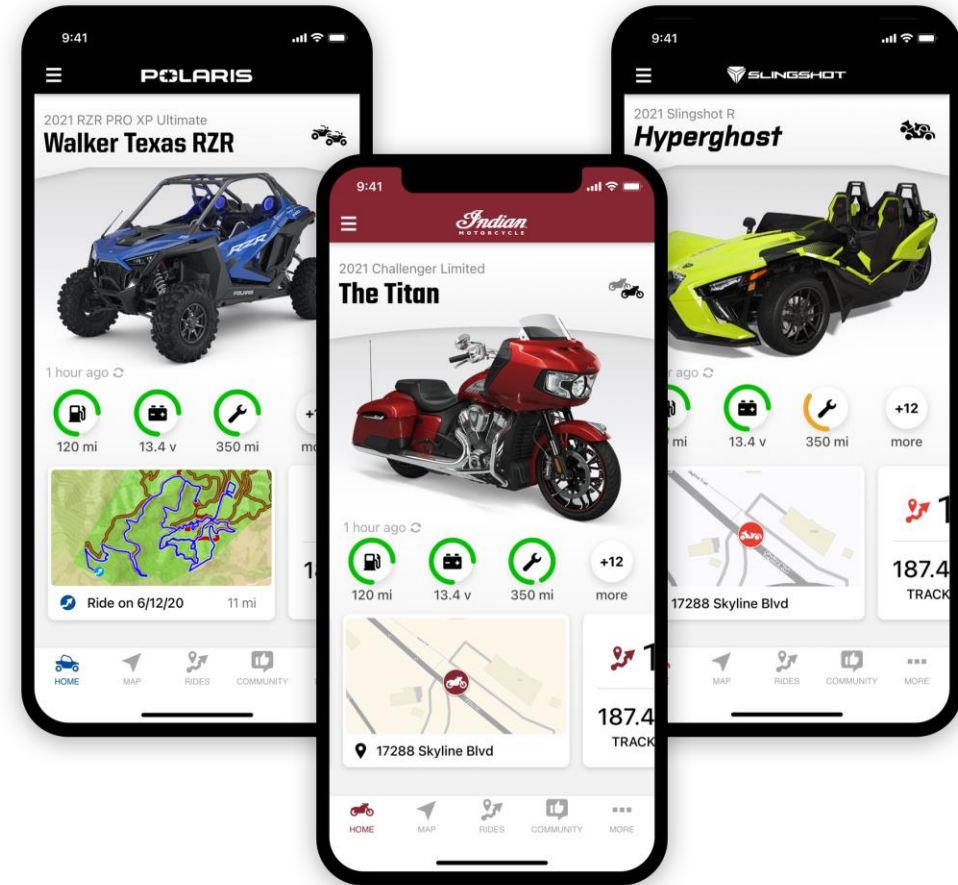
- Polaris Off Road & Snowmobile Trails
- Indian Motorcycle
- Slingshot

## Download the Ride Command app on your smartphone

- Completely free
- No ads or in-app purchases
- Available on iOS & Android

## Register and login

- You can use your Polaris.com login for Ride Command



**It's Super Easy**



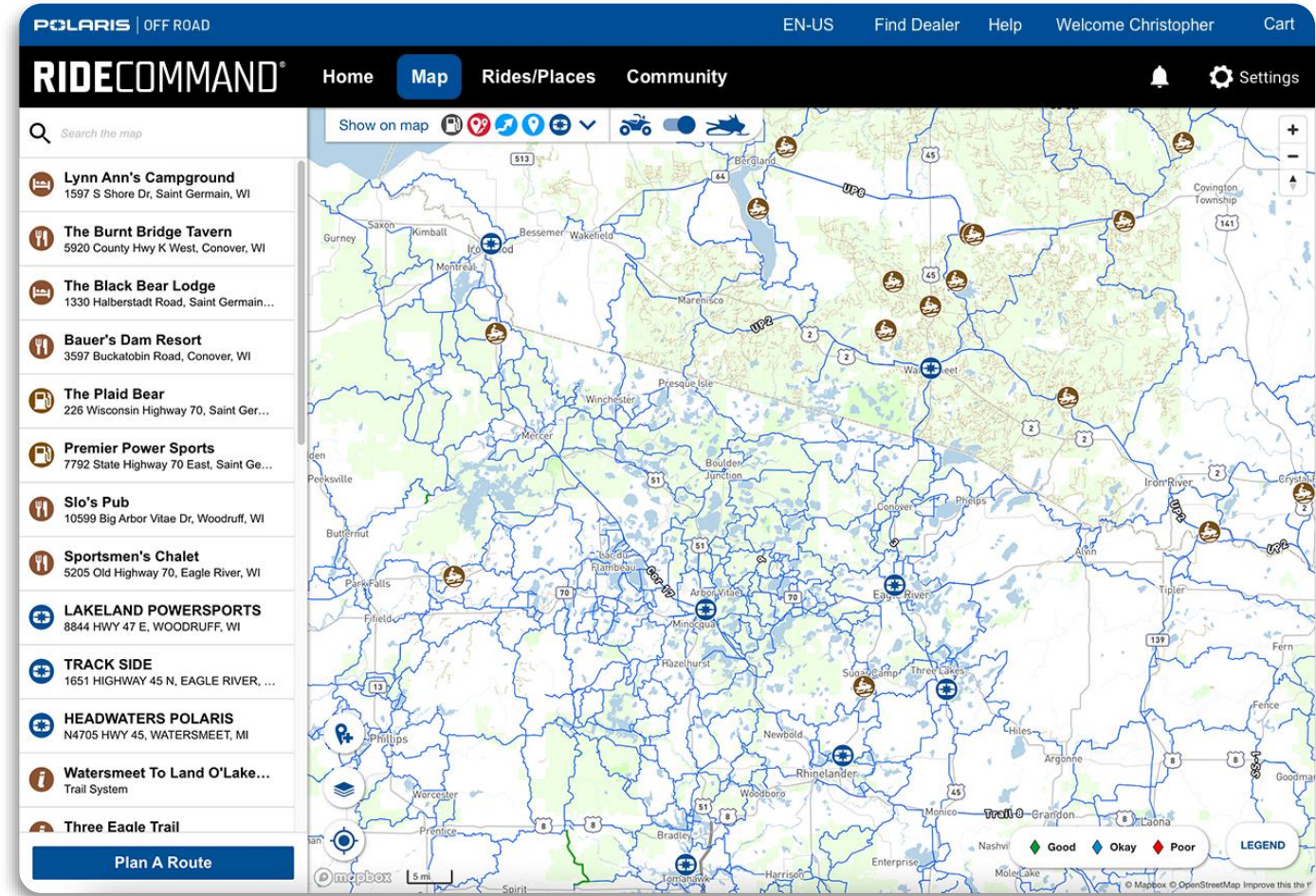
## Ride Area icons

- High-level trip planning and exploration
- Map shows ride areas and trail systems as “information” icons

## 1 Million+ miles of marked trails

- App shows your location atop the trail network
- Map shows trails as lines with a color based on classification with names are printed atop the lines.

**NOT CROWD-SOURCED!!! Must be VERIFIED as legit**



**Most Miles of Any Trail App**



## Offline Maps

- Download before you go!
- Up to 3 provinces or states
- Offline maps show basemap, trails, trail systems, and points of interest
- Offline maps update automatically
- *Seamless* transition to offline map display when connectivity lost

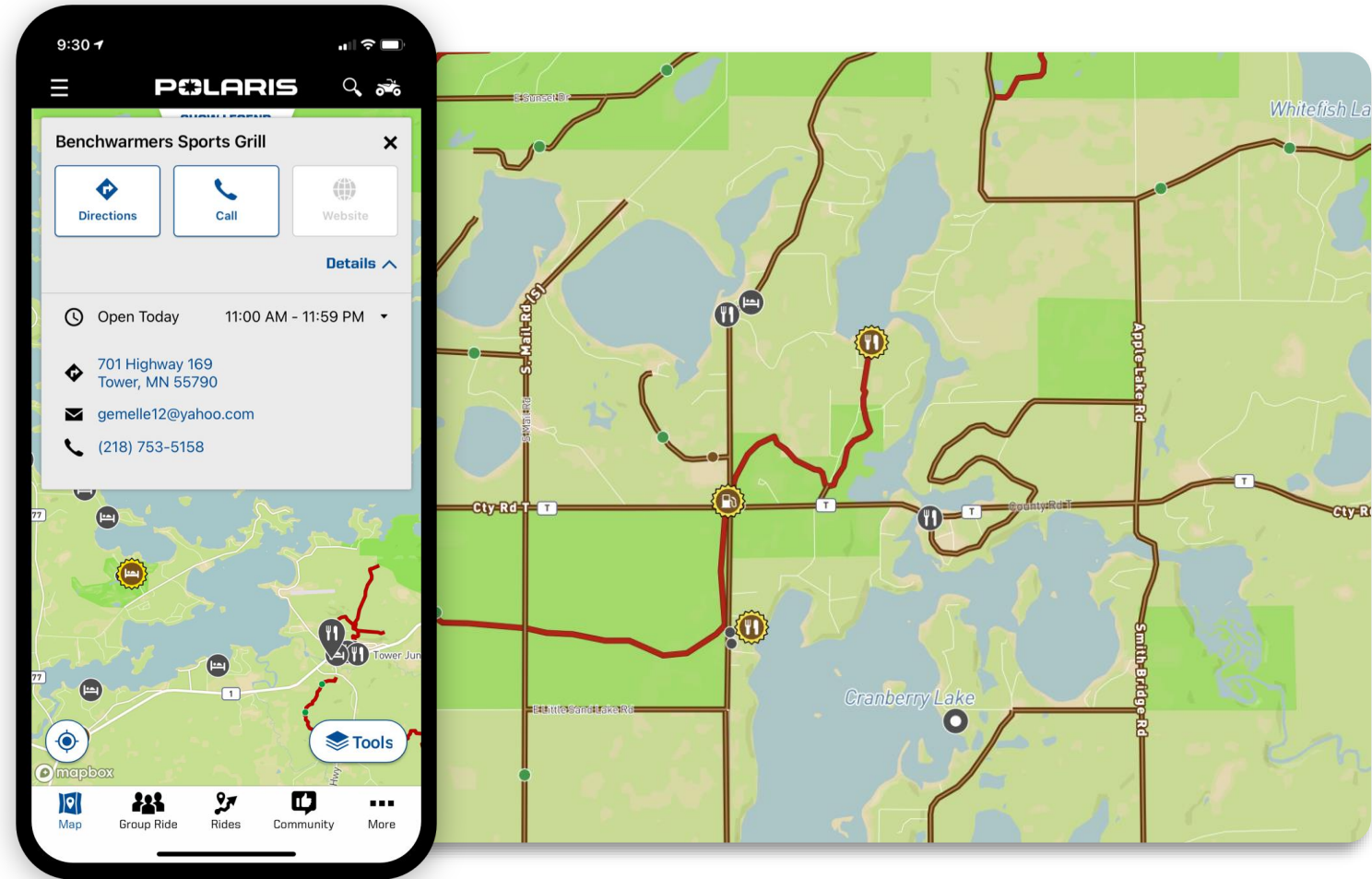


**No Cell Service Needed**



## Points of Interest (POI)

- Local Businesses
- Gas stations, restaurants, and other amenities appear as small gray icons
  - Contrast to Premium POIs
- Navigate, call, or browse



Services You Need Found Easily



- **Ride Tracking and Custom Personal Waypoints**
- **Track/record your rides and see cumulative distances and times**
- **Add your own favorite spots to the map by adding a waypoint**
- **3D view of ride track**
- **All data automatically backs up to the cloud and syncs with [ridecommand.polaris.com](https://ridecommand.polaris.com)**

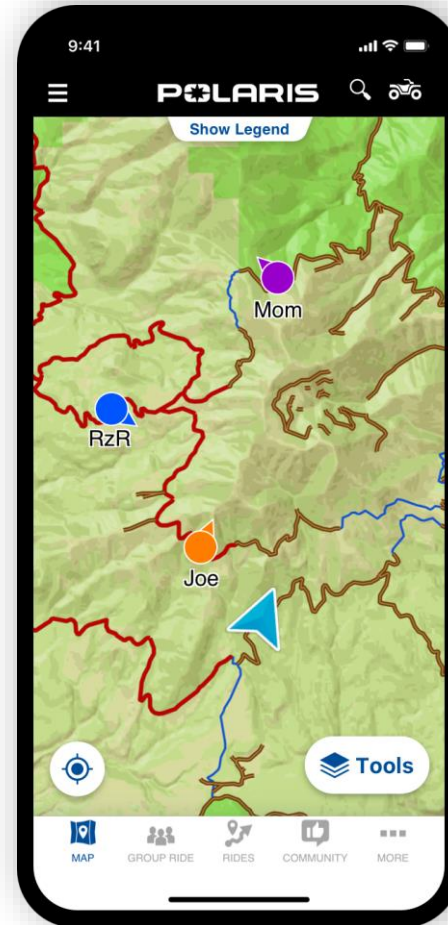


**Show Off Where You've Been**



## Group Ride

- Create a group and give it a name
- Your friends join your group
- Everyone can see everyone else on the map
- Optionally set a PIN to make your group private
- Invite friends via text/email to download the app and join the group
- **New:** *Follow the Leader*



Don't Get Left Behind

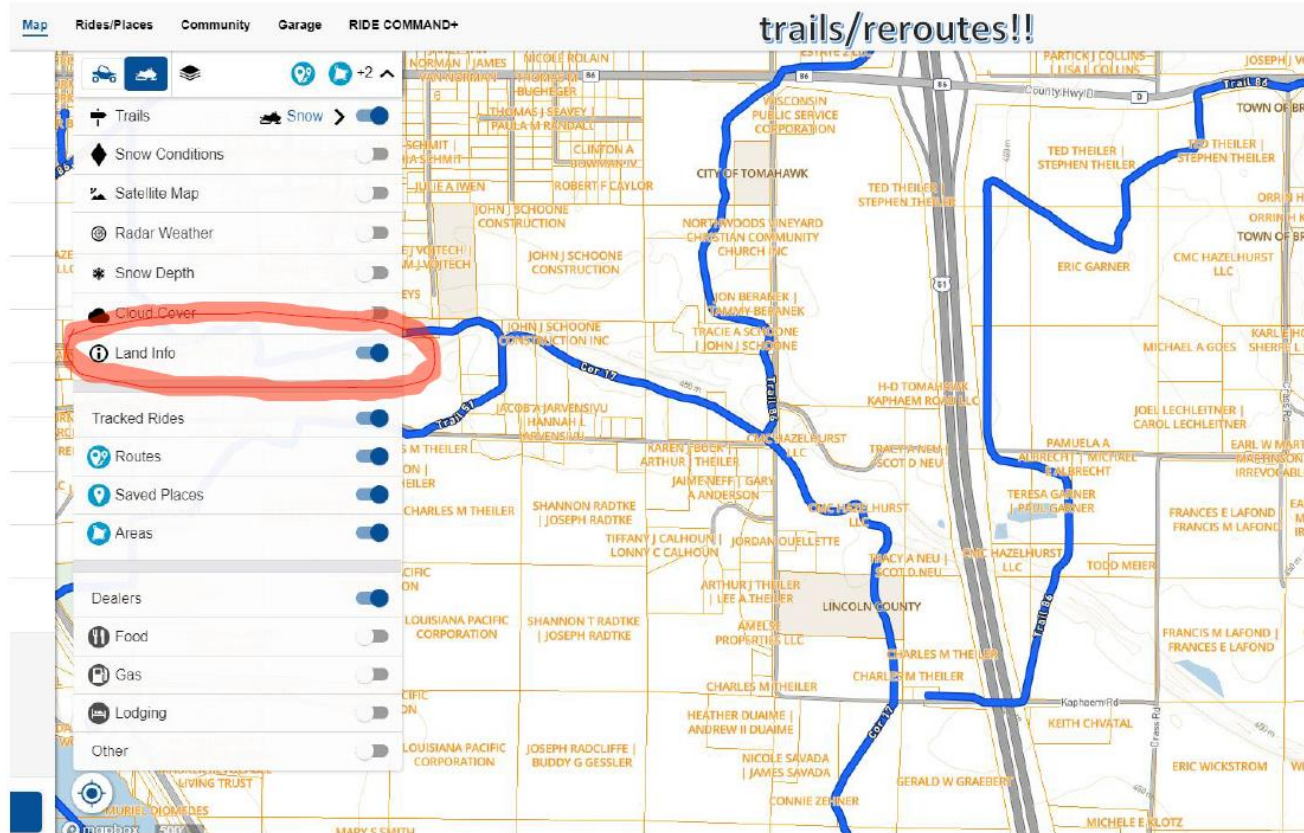
# 'Land Info' – Goal is to help curb trespass on other lands!!



**POLARIS**  
**RIDECOMMAND**

Use 'Land Info' to update your Landowner Lists  
for DNR and Insurance programs. Can help  
with landowner contact for new

trails/reroutes!!



Shows 'public'  
lands in different  
colors from  
'private'  
Clubs and riders  
can all use the  
info to know  
boundaries

**Don't want to see more posts about trails being closed**

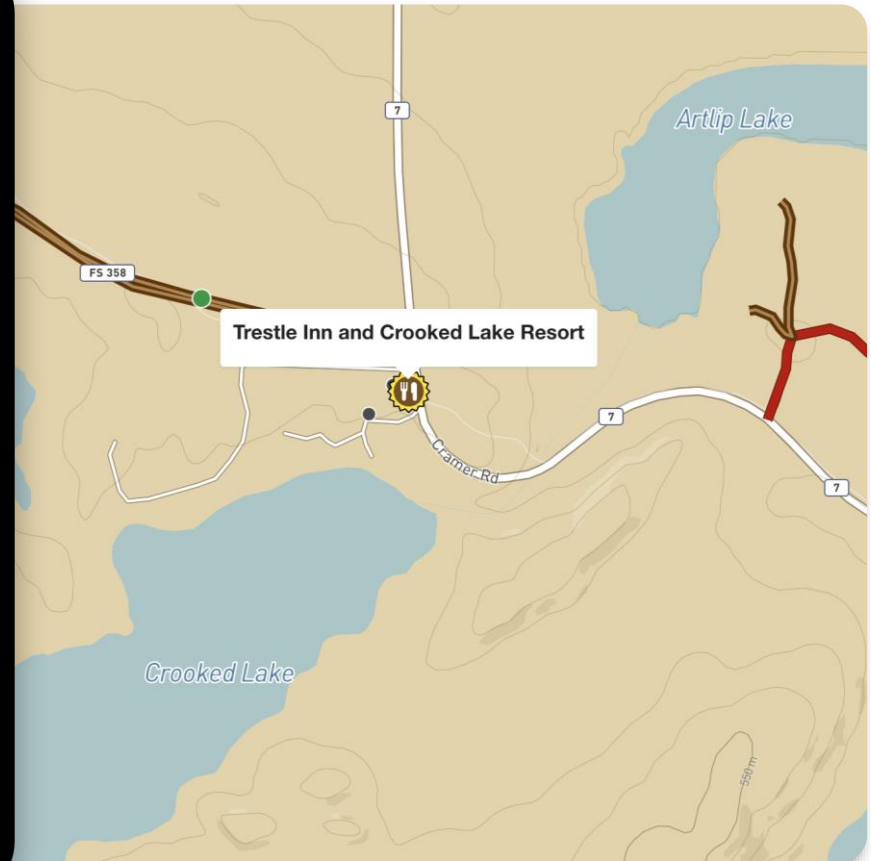
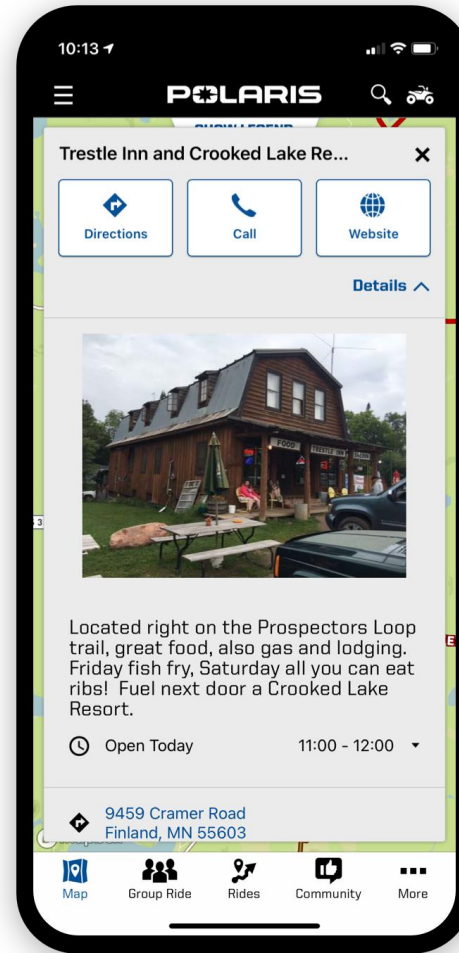


## Ride Command's POI layer is for club-sponsoring businesses!

- Known as Premium POIs
- All other POIs off by default
- Ride Command users very likely to see/visit these businesses

## Premium POIs are:

- A potential revenue boost for clubs
- Fully-controlled by clubs
- Always visible – cannot be turned off
- Display a hand-selected picture and custom description written by club



**Helps Clubs with Fundraising and is Free**



## PREMIUM POINTS OF INTEREST (PPOI's)

**POLARIS RIDE COMMAND**

Home Map Rides/Places Community Garage RIDE COMMAND+

**Nutzee's Resort, Bar & Restaurant**

On the ATV & Snowmobile Trail. Premium gas. Lunch and Dinner. Two camping units coming in spring. Outdoor patio DAILY SPECIALS: Sunday, 9-12 breakfast buffet & bloody Mary bar, 12-9 full menu, 4-9 broasted chicken dinners. Monday, full menu and 4-9pm \$5 Burger & FF; Thursday, full menu 11-9, 4-9pm broasted chicken and pizza buffet with full salad bar. Friday full menu 11-9pm, Fish Fry 4-9pm; Saturday 9-12 breakfast buffet with bloody Mary bar, 12-9pm full menu, 4-9pm prime rib dinner Closed Tuesday & Wednesday.

N9831 County Rd B  
Gleason WI, 54435  
715-453-8546

Open Today 11 AM - 12 AM

Proud Sponsor Of

**Knight Owls Snowmobile Club**  
[www.knightowlsnowmobileclub.com](http://www.knightowlsnowmobileclub.com)

Plan Ride

Add Your Club's Business Sponsors to the Map; clubs keep all ad dollars!! Fundraising \$\$

-Clubs add their business sponsors (only clubs can add these businesses)

-Club sponsors get called out with special Icons on the map

-Clubs decide price for business ads and all proceeds are kept by the club for whatever purpose needed

-Can set ads to expire annually, or whenever desired by club

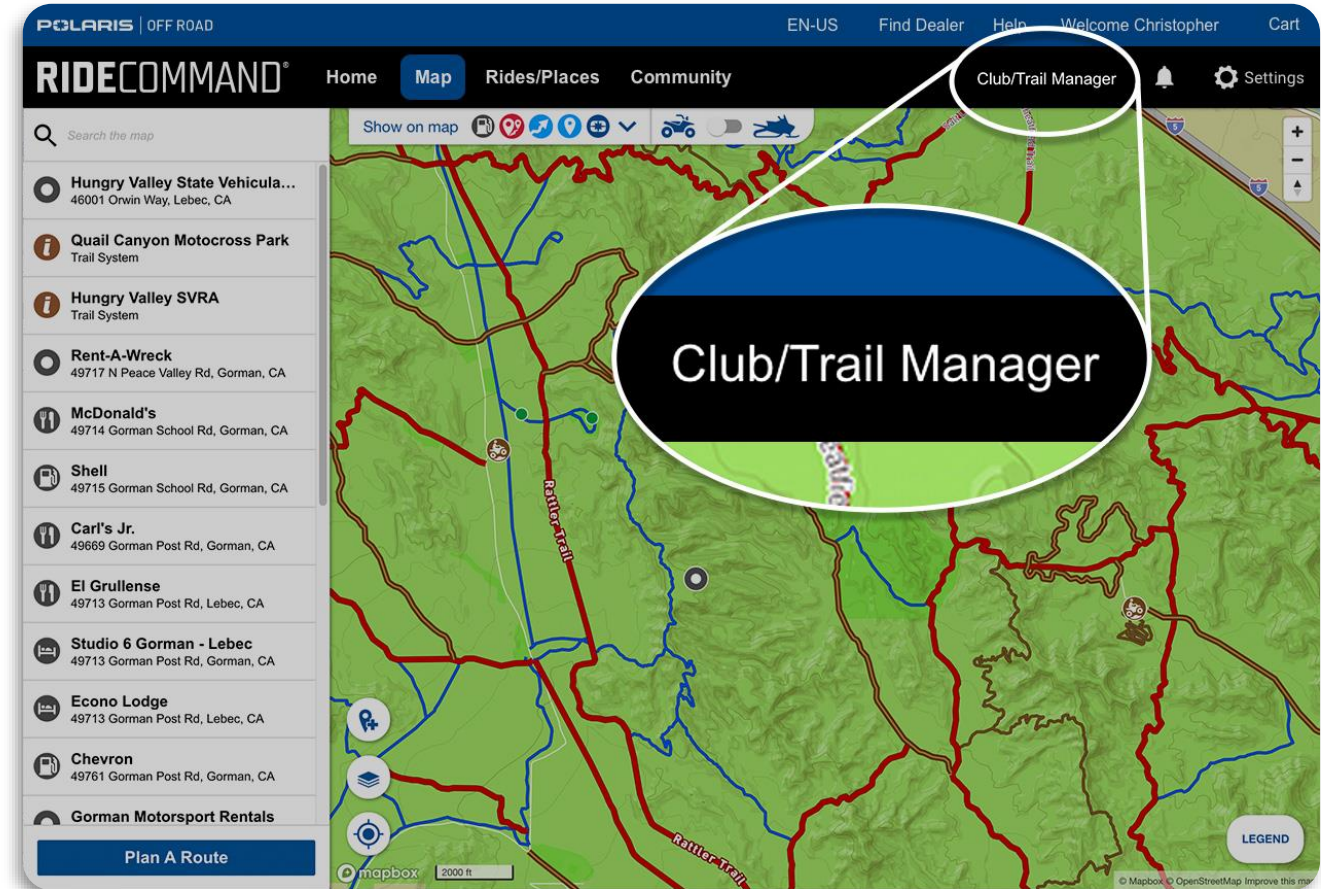
-Business ads show name of local club that they are supporter of

**Great tool for clubs. It's FREE!! Use It.**



- Clubs can now join Ride Command
- 3,000+ Snowmobile and ORV clubs across North America
- Over 700 clubs have joined Ride Command, and more than 20 State/Provincial Associations

**GROW WITH US and HAVE YOUR CLUB JOIN RIDE COMMAND!**



**Riders are Using it!**

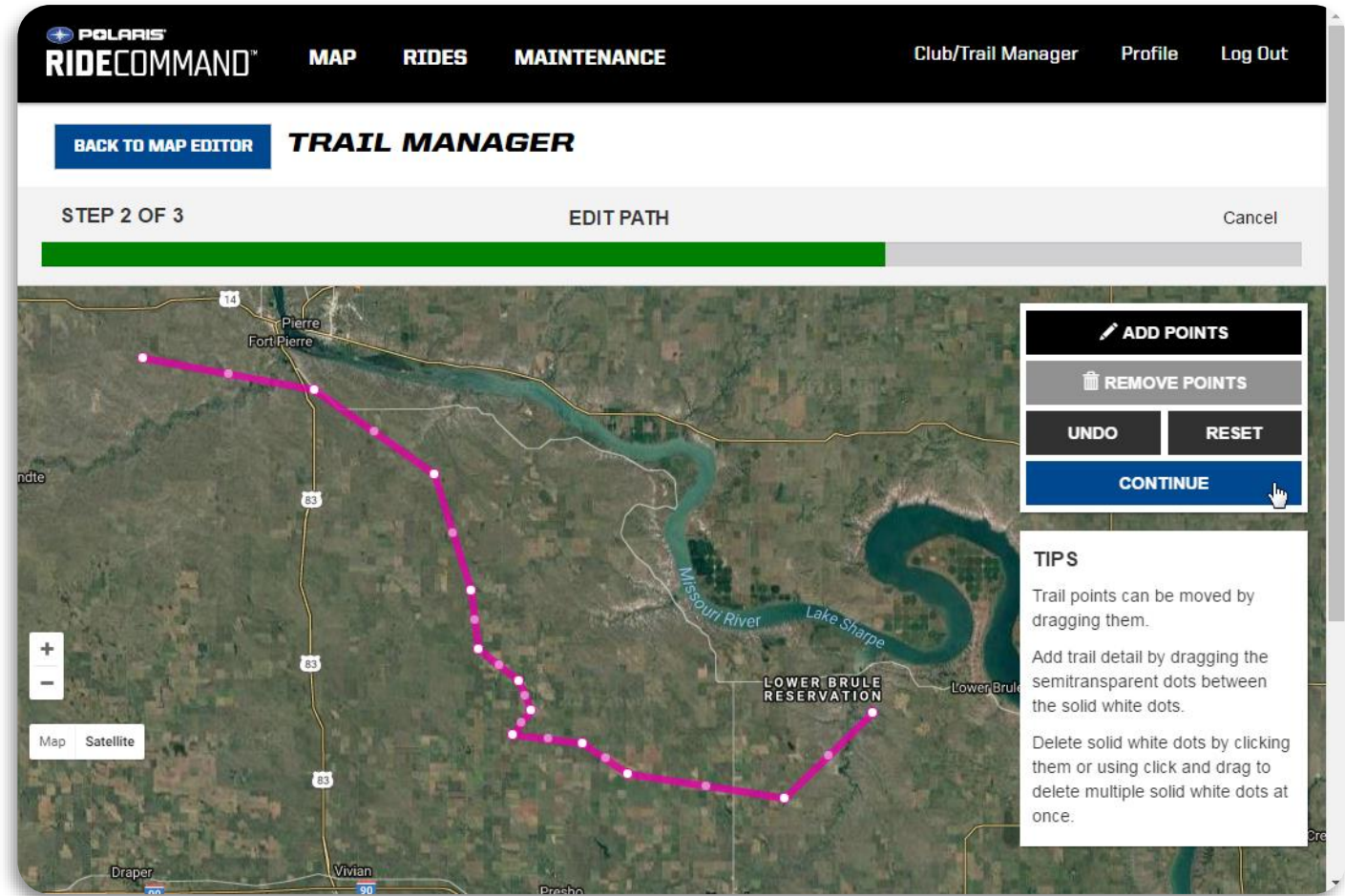


## 1,500,000+ km of trails

- Claim existing trails
- Add new trails
- Re-route trail path
- Mark trails as open or closed

## Maps updated nightly

- Web, mobile
- Vehicle displays updated via USB from website to machine;



## Accurate Daily Trail Information



## Questions?

### Booth in the Hallway Today

### Thank you AWSC Clubs for all you do to keep trails open for public riding!!!

Contact Info:

Name: Chris Gamache, Trails Manager

[chris.gamache@polaris.com](mailto:chris.gamache@polaris.com) OR

Dave Halsey, Trail Ambassador

[david.Halsey@polaris.com](mailto:david.Halsey@polaris.com)